

# Lawless

# BEGINNER'S NOTEBOOK 1

## Foreword

Reading, writing and playing notes accurately is fundamental to learning the language of music; and nowhere is this principle more important than in preparing the beginning student for his or her first encounter with the piano.

This little book, then, has one primary purpose: to give teachers a useful and imaginative resource of preparatory exercises for students learning to read, write and relate notes to the keyboard.

Most of the exercises have been graded, because grading not only provides an incentive to students to do their best, but also reflects the students' progress; therefore marking is particularly helpful in quickly pinpointing areas requiring immediate review. The marking system is based on giving 1 mark for each correct answer.

Wishing you every success—confident that you'll find this book very enjoyable and practical to use.

Jim Lawless

## Contents

The Line Notes of the Treble Staff .....	3
The Space Notes of the Treble Staff .....	8
The Line Notes of the Bass Staff .....	12
The Space Notes of the Bass Staff .....	17
Treble Staff Review .....	21
The Notes Between the Treble and Bass Staff .....	22

Sample page

## The Line Notes of the Treble Staff

3



Music is written on the lines and spaces of a STAFF.

There are two staves. Each staff has 5 lines and 4 spaces.

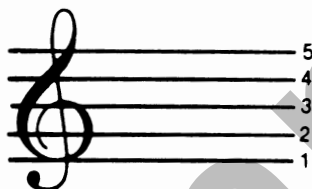
Composers write their music with notes on these lines and spaces.

The higher sounding notes are written on the staff with the sign of the TREBLE CLEF.

The clef sign is always written at the beginning of each staff.

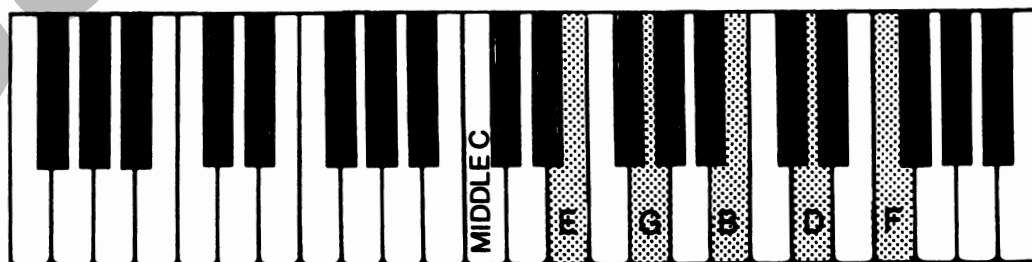
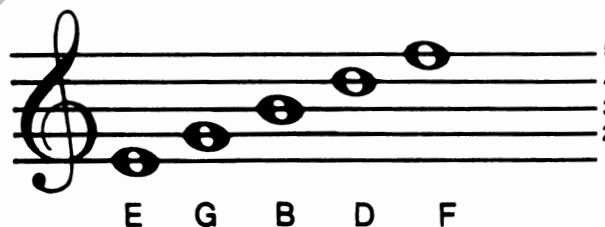
Notes on the treble staff are played with your right hand.

Each LINE in the treble staff has its own name: E G B D F.



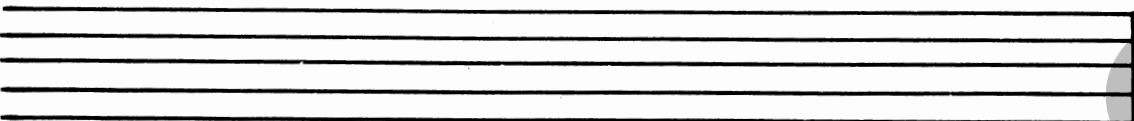
Notes get their names from the lines on which they are written.

Play and name these notes:

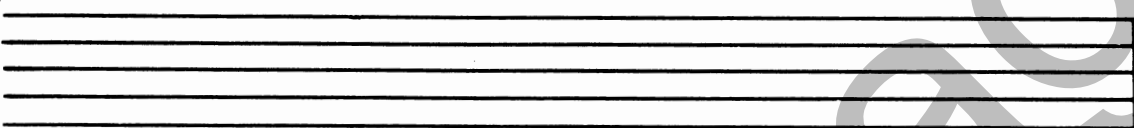


**PERFECT SCORE: 66    STUDENTS SCORE:**

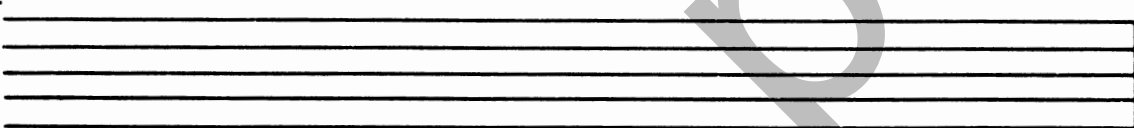
**Draw the treble clefs. Write the notes.**

1. 

MIDDLE  
C      E      A      C      D      E      B      G      F      D

2. 

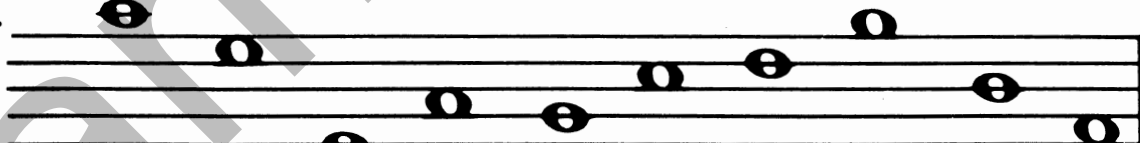
A      C      D      B      G      F      C      A      B      E

3. 

C      D      E      MIDDLE  
C      B      A      E      G      F      D

**Draw the bass clefs. Name the notes. Play the notes.**

1. 

2. 

3. 

-----